

Break Source Analysis (BSA)

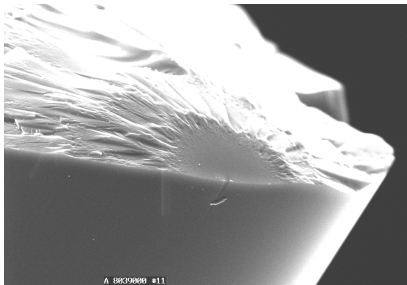
Influence of fiber breaks on cost

Excessive fiber breaking under proof test causes increased production cost, reduces average delivery fiber length and limits productivity.

At break rate of 30 breaks/1000 km, with fiber price of 15 USD/km in a plant with 2 million km per year output, the fiber breaks increase fabrication cost by roughly **495 000 USD** per year !

When fiber break rate is reduced from 30 to 15 breaks/1000 km the savings amount to about **250 000 USD**, just in the cost of fiber. These savings are larger with longer fiber delivery lengths!

If world class performance is achieved (around 6-7 breaks per 1000 km) more than 80 % of all fiber produced will be in lengths of 25 km, a length that all cable manufacturers prefer and pay full sales price for.



Service Description

Optacore can offer a range of services and support to fiber makers in the field of fiber break analysis, break rate reduction and process optimization, as training courses or consultation services of different complexity and duration.

Specialist in BSA and fiber processing (with year-long experience in some of the most advanced fiber fabrication plants) provide knowledge and analytical tools for optimization of fiber break rate, reducing fabrication cost and increasing overall yield.

Consultation services from BSA specialists can be adapted to individual customer requirements and can cover the following activities:

- assessment and introduction
- training and break rate analysis
- break rate optimization

In each of these courses or support packages, the customer receives relevant information about break source analysis principles, fiber break causes and procedures for evaluation of broken fibers by microscopy. Information is supplied on type of equipment and accessories necessary for conducting BSA analysis.

The packages differ by the volume of information and knowledge exchanged, in duration and in the depth of analysis performed.

package	description	duration
BSA-01	assessment visit	1 week
BSA-02	training course	4 weeks
BSA-03	break rate optimization	12 weeks

While in assessment package only basic information and knowledge about BSA is transmitted, with analysis of a limited number of fiber breaks, training and optimization packages provide thorough training of customer's personnel and in-depth analysis of causes for fiber breaks.

Furthermore, in the optimization package customer's process is analyzed step-by-step and causes for fiber breaks are identified and eliminated.

Packages include off-site support and services to help customer master BSA procedures in the period immediately after training.

Customer is required to provide analytical equipment and accessories suitable for BSA procedures. If necessary, it can be provided by BSA specialists at competitive prices.

For more detailed information about break source analysis support packages call us or write to the following address:

CONTACT: OptaCore d.o.o. tel. +386 1 546 12 68
 Trpinčeva ul. 39 fax +386 1 546 12 69
 1000 Ljubljana borut.lenardic@optacore.si
 Slovenia

Note: Optacore reserves the right to change description and/or specification of this product without notice.